



MONTHLY MEMBERSHIP PROGRESS REPORT

District 3 L

Results as of: 10/31/2014

GMT: HAL GRIFFIN

LOCATION OKLAHOMA

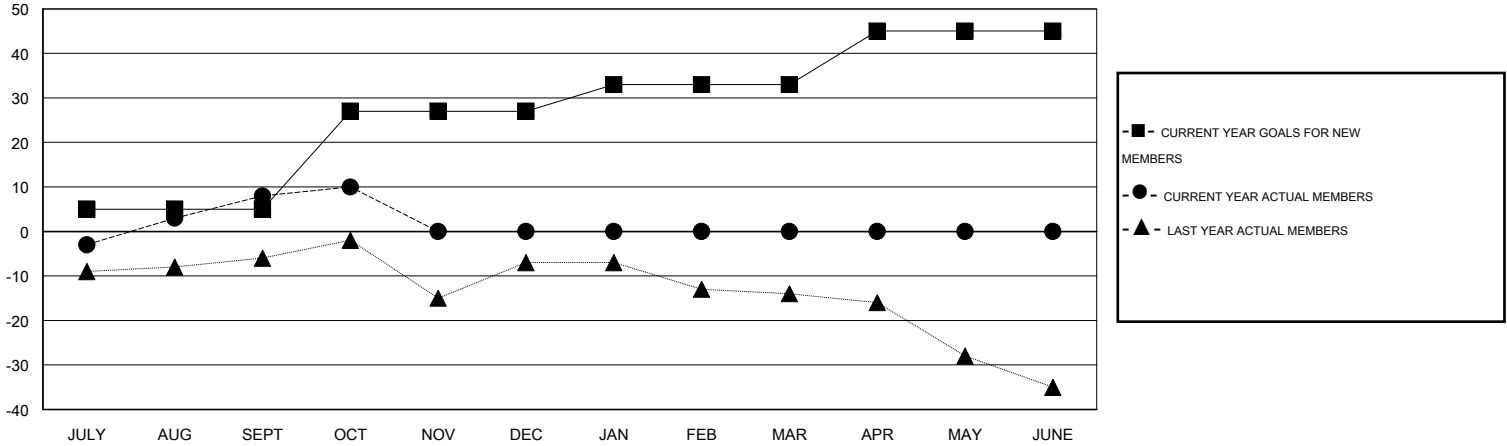
GMT CA 1

Clubs					Members				
RESULTS FOR 2014-2015					RESULTS FOR 2014-2015				
QUARTER	NEW CLUB GOAL	NEW CLUBS	DROPPED CLUBS	NET GAIN/LOSS	QUARTER	NEW MEMBER GOAL	CHARTER AND NEW MEMBERS ADDED	DROPPED MEMBERS	NET GAIN/LOSS
JULY/AUG/SEPT	0	0	0	0	JULY/AUG/SEPT	5	24	16	8
OCT/NOV/DEC	1	0	0	0	OCT/NOV/DEC	22	11	9	2
JAN/FEB/MAR	0	0	0	0	JAN/FEB/MAR	6	0	0	0
APR/MAY/JUNE	0	0	0	0	APR/MAY/JUNE	12	0	0	0

GOALS AND ACTUAL NEW CLUBS CUMULATIVE



GOALS AND ACTUAL MEMBERS CUMULATIVE



DROPPED CLUBS: 0	19 CLUBS OF 36 ADDED 1 OR MORE NEW MEMBERS	GENDER DISTRIBUTION
		MALE 546 (67.91%)
		FEMALE 258 (32.09%)
DROPPED MEMBERS	CLICK HERE FOR HEALTH ASSESSMENT DATA	FAMILY UNIT MEMBERS 117
DECEASED 5		HEAD OF HOUSEHOLD 58
CLUB CANCELLED 0		NON-HEAD OF HOUSEHOLD 59
OTHER 20		
TOTAL 25		